

473Use guidance-How to set SSL Certificate

© 2015 Rakwireless all rights reserved .

Mentioned in this document , the actual company and
product names, trademarks are their respective owners.

After update the new version, this document without prior notice.

1. AT Command upload SSL Certificate

1.1 Summary

This part introduce How to use AT Command to upload SSL certificate, The use of the AT command is:

at+set_cert=< cert_type>,<file_len>,<data_stream>\r\n

| Parameter | Number | Explain |
|---------------|--------|------------------------|
| < cert_type> | 0 | SSL Client Private Key |
| | 1 | SSL Client Certificate |
| | 2 | SSL CA Certificate |
| <file_len> | <4K | Certificate length |
| <data_stream> | | Certificate content |

1.2 Operating instructions

NOTE:

1.Through the MCU to send command to control module,The command statement ends with the character "\r\n";

2.Through the serial port tool send command to control module,The command statement ends with the Enter;

3.For ease of viewing, the information sent back to the command is displayed in the ASCII code. If there is information that is not comprehensive or garbled, may have special characters return information,China text or other information,Then please display in sixteen.

Please remember the above, these are not repeated at the back of the document.

1.3 Operation steps

1.Install Ultra Edit software, This soft can be using open certificate.



2.Use Edit Ultra software to open the certificate

Such as raktest_ca.crt、 raktest_client.crt and raktest_client.key file 。

3.Power to module,

Return Welcome to RAK473, also show as sixteen (57 65 6C 63 6F 6D 65 20 74 6F 20 52 41 4B 34 37 33 0D 0A) 。

4.Set the following three certificates:

at+set_cert=2,1062,<raktest_ca.crt>\r\n

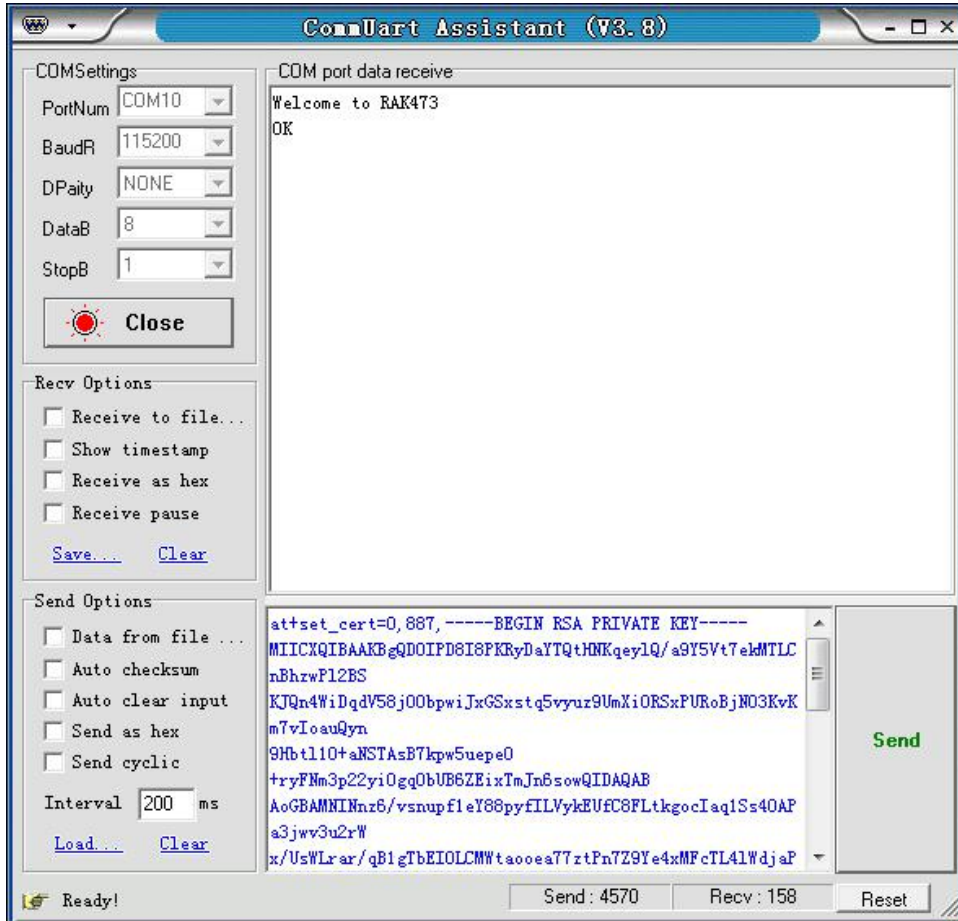
at+set_cert=1,3223,<raktest_client.crt>\r\n

at+set_cert=0,887,<raktest_client.key>\r\n

V1.1

Upload success as shown below:

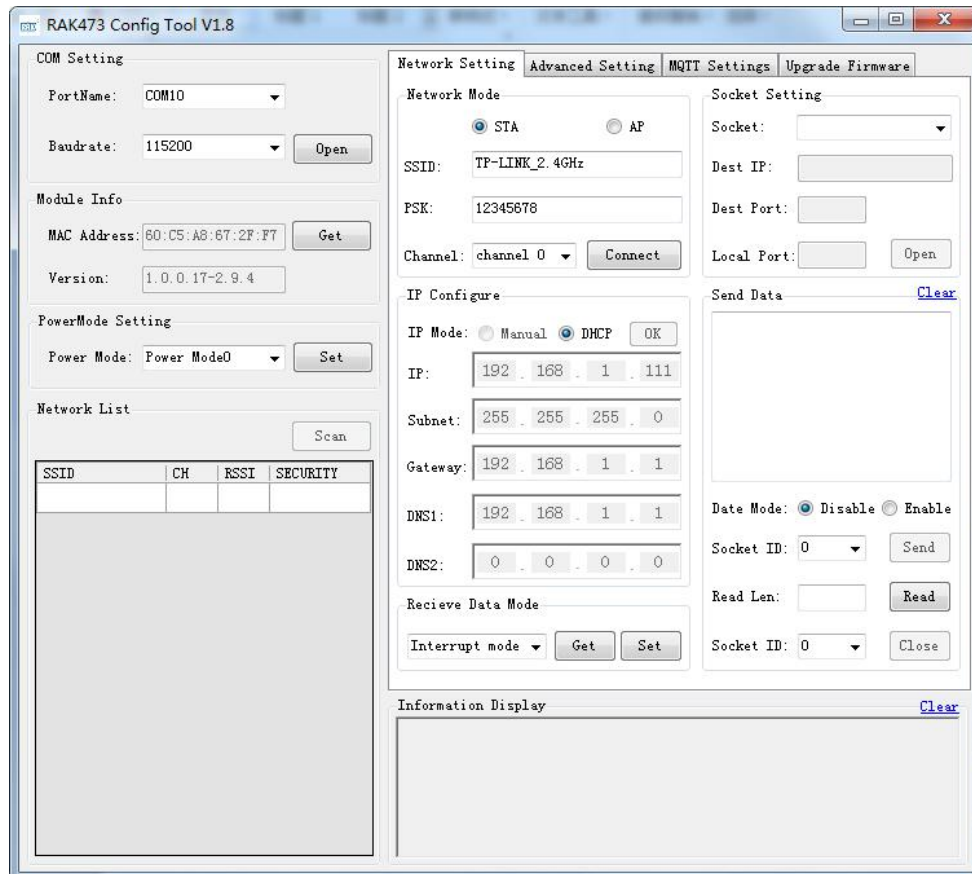
Note: this upload is more complex, the first need to calculate the size of the certificate byte, followed by the need to upload the contents of the certificate to the module, the operation is complex, not recommended to use this way.



2. RAK473Config Tool upload SSL Certificate

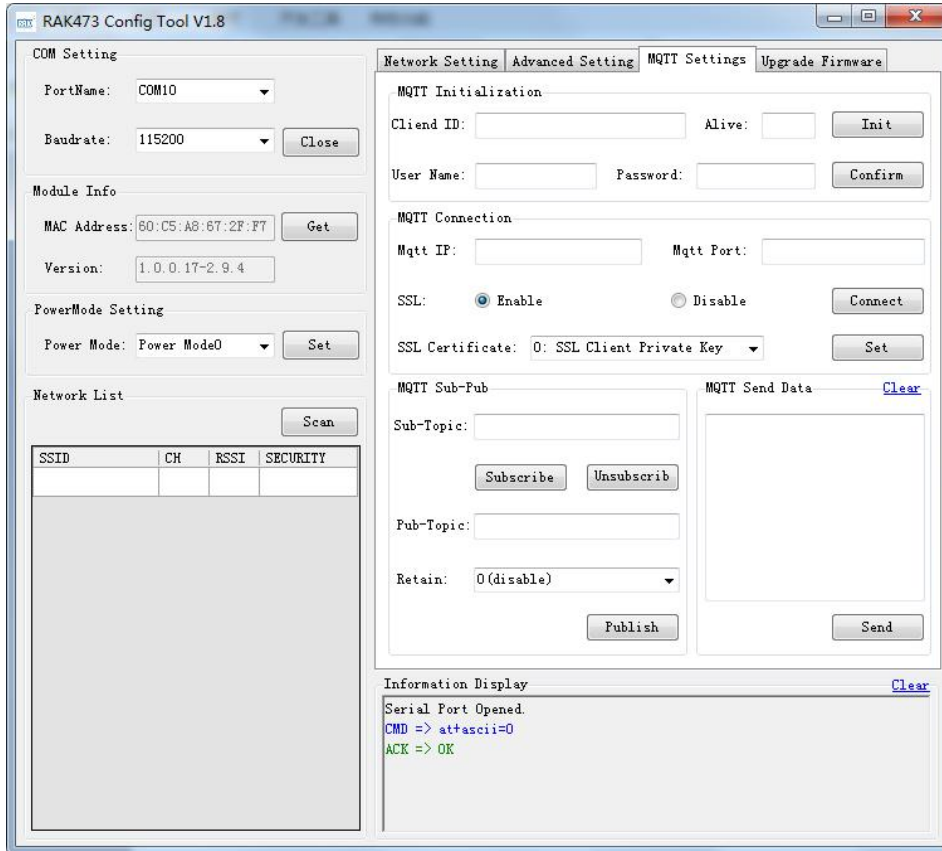
2.1 Summary

This part introduce How to use RAK473Config Tool to upload SSL certificate , Using tool is the RAK473ConfigToolV1.8

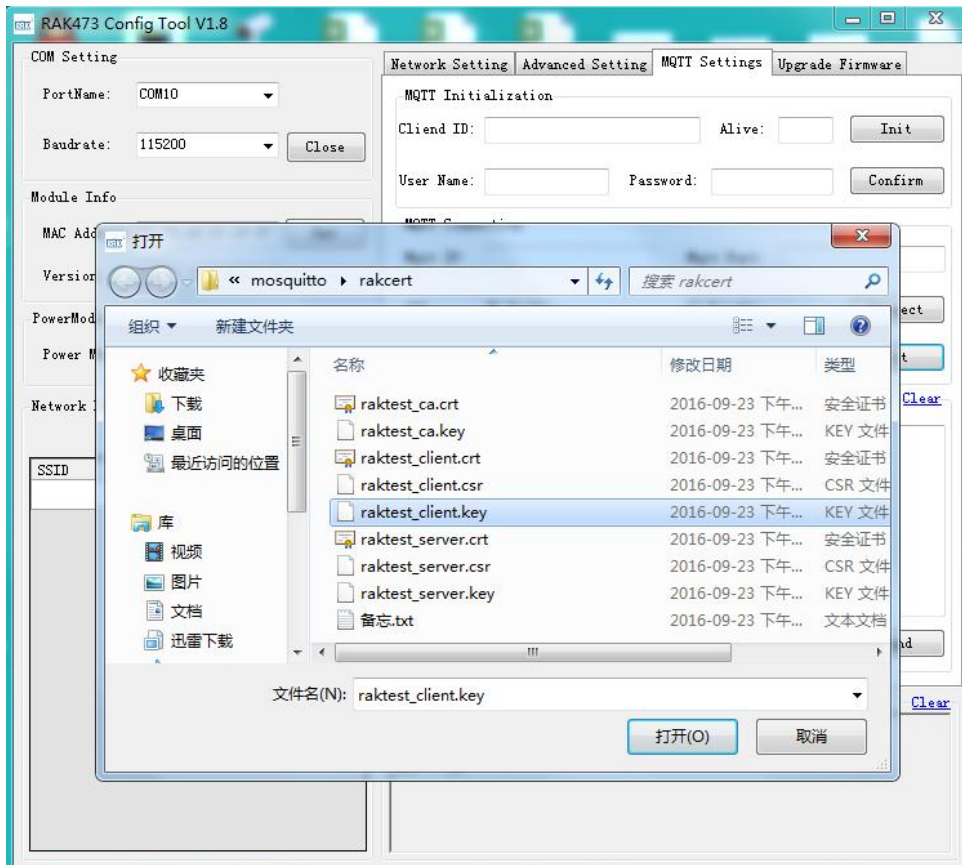


2.2 Operation steps

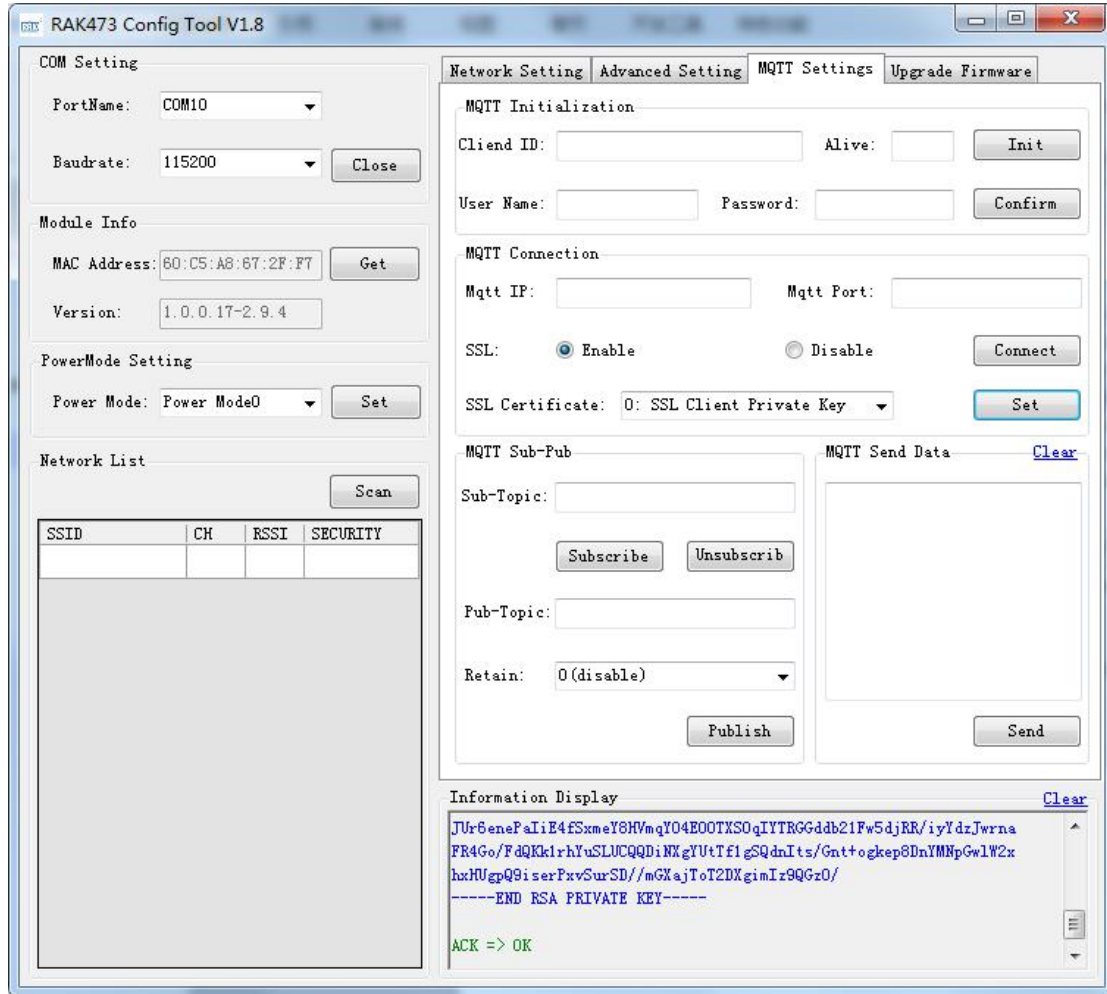
1. Module through the serial port connected to the computer, the module power on.
2. Open the RAK473ConfigToolV1.8, Choose the module serial port, baud rate is 115200, Then click Open.
3. Click on the software top right MQTT Settings Enter MQTT setring page, Select Enable in the SSL bar, Then you can upload the SSL certificate.



4. In SSL Certificate bar choose the upload certificate's type, Then Click set to find the path of the certificate can be set successfully. (Three types of certificates are to be uploaded)



V1.1



V1.1

3. Modify record

| Version | Author | Time | Modify content |
|---------|--------|------------|------------------|
| V1.0 | 王连博 | 2016/02/02 | Create documents |
| V1.1 | 操小成 | 2016/09/24 | Update document |