

# RAK473/476 Use Guidance

## One-Key Configuration Router

Shenzhen Rakwireless Technology Co., Ltd.

[www.rakwireless.com](http://www.rakwireless.com)

[info@rakwireless.com](mailto:info@rakwireless.com)

© RAK copyright. All rights reserved.

Companies and product names referred in the instruction belong to trademarks of their respective owners.

Any part of this document may not be reproduced, and may not be stored in any retrieval system, or delivered without RAK's written permission.

The document will be updated without prior notice.

# 1. One-key Configuration Router

## 1.1 Overview

This section describes how to use the mobile phone APP to quickly configure the module to the designated router with one-key configuration function.

## 1.2 Operating instructions

### Tips:

1. When the command control module is sent via MCU, the character "\r\n" are as the ending characters for the command;
2. When the command control module is sent via the serial port tool, **press the Enter key** as the ending character for the command;
3. The information returned following the command can be presented in ASCII code for easy viewing. If the information display is not comprehensive or garbled, there may be special characters, Chinese characters, etc. in the return information, so please view the information in the hexadecimal form.

Please bear the above points in mind, we will not repeat them later.

## 1.3 Operating Procedures

### Tips:

1. Power on the module. Boot to return Welcome RAK473 (**Welcome to RAK476**). The return information can also be viewed in hexadecimal (57 65 6C 63 6F 6D 65 20 74 6F 20 52 41 4B 34 37 33**(36)** 0D 0A).
2. Send one-key configuration command at + easy\_config (Figure 1-1) to allow the module to enter one-key configuration state (the other commands are invalid after one-key configuration command is sent until the end of one-key configuration).

Send: at+easy\_config\r\n

Return: OK ..... (hexadecimal is 4F 4B ....., please see the relevant programming manual for the information behind OK)

After the following steps, OK+ ... will be returned if the configuration is successful;

If the configuration fails or is not configured within 1 minute, ERROR is returned.

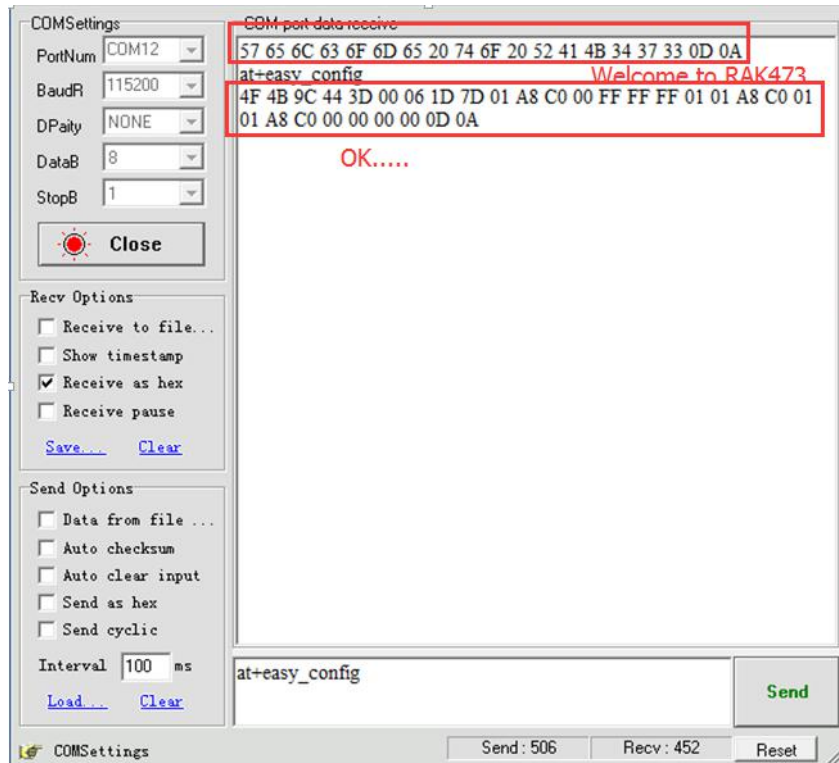


Figure 1-1 Schematic diagram for serial port sent command

3. Take out the phone and connect it to a router through the network.
4. Open the APP named RAK47XConfigure on the phone, select the corresponding module type, and then click Config below to switch to the SimpleConfig interface (Figure 1-2).
5. Click "SimpleConfig" and enter the SSID and password of the router to which the phone is connected.
6. Click Connect to start one-key configuration. (Figure 1-3)



Figure 1-2 APP operation procedure

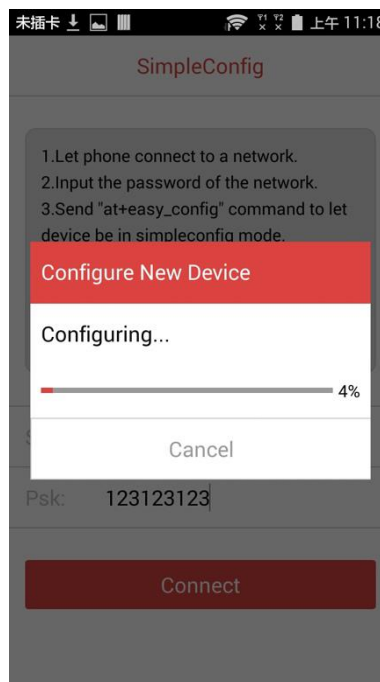


Figure 1-3 Start one-key configuration

7. If the configuration is successful, serial port and APP will receive the return information.

(1) Serial port returns: 4F 4B 9C 44 3D 00 06 1D 7D 01 A8 C0 00 FF FF FF 01 01 A8 C0 01 01 A8 C0 00 00 00 00 0D 0A (Figure 1-1).

(2) APP returns: MAC address of the module.

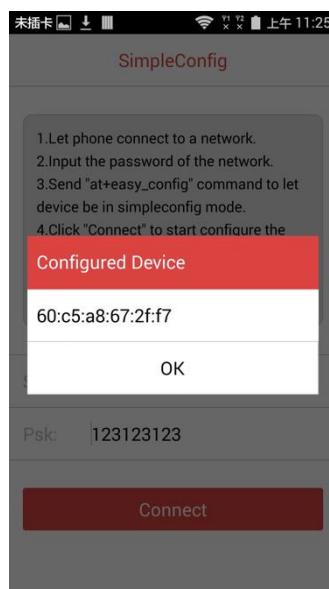


Figure 1-3 APP returned information after the configuration is completed successfully.

After the configuration is completed, data receiving and sending test can be carried out, which will not be repeated here.

## 2. Version

Version	Author	Date	Content modification
V1.0	Lianbo Wang	2016/02/02	Create a document
V1.1	Xiaocheng Cao	2016/09/28	Modify some of the details