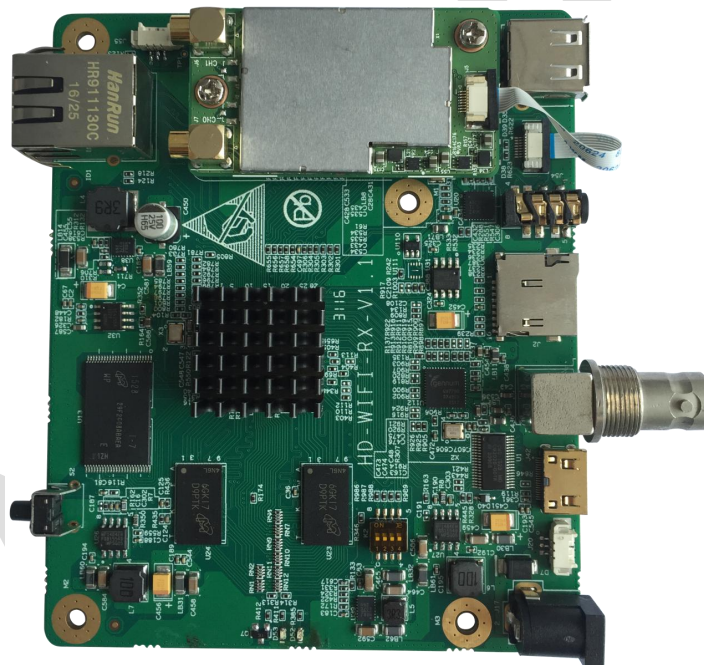


RAK567 Video HDMI Output Datasheet V1.5



Shenzhen Rakwireless Technology Co.,Ltd www.rakwireless.com

Mail: info@rakwireless.com

Content

1 Overview	1
1.1 Module overview	1
1.2 Application Field	1
1.3 Product Features	1
1.4 Parameters	3
2 Hardware Overview	4
2.1 Module overview	4
2.2 Module size	4
2.3 Interface	5
3 Radio Feature	7
4 Electrical Characteristics	14
4.1 Absolute maximum	14
4.2 Recommended operating parameters	14
5 Order Information	15
6 Sales and Technical Support	16
7 Revision&History	17

1 Overview

1.1 Module overview

RAK567 supports IEEE802.11a/b/g/n wireless protocol ,it is an intelligent image transmission module which support the CVBS,WIFI,HDMI,USB and SDI video output.It has small foot print and the easy using feature. The Module support the H.264 codec and the sound processor and it is specially designed for accelerating video/audio streaming performance with 300Mbps data rate WIFI module . To fast the evaluation, the user can get the demo Apps on Android, iPhone and HDMI,CVBS,SDI input equipment to complete the play and display of audio and video. RAK567 integrates the high-speed serial port to use for transparent data interaction.

RAK567 integrates the WIFI Module ,which support IEEE 802.11a/b/g/n 2x2 MIMO.The data rate is up to 300Mbps and it have 22dbm TX power.The module support the remote image transmission.

1.2 Application Field

- Air vehicle
- Smart Robot
- Underwater Robot
- Oceanographers
- Building Automation
- Logistics and freight management
- Family safety and automation
- Safety Inspection

1.3 Product Features

- Powerful WIFI
 - Support IEEE 802.11a/b/g/n protocol
 - TX Power \leq 22dBm
 - Soft AP Mode
 - 2x2 300M PHY Rate
 - support Infra/Soft AP network type
 - support multiple security authentication mechanism: WEP64/WEP128/ TKIP/CCMP (AES) /

WEP/WPA-PSK/WPA2-PSK

- supporting many network protocol: TCP/UDP/ICMP/DHCP/DNS/HTTP

● Efficient Video Encode

- Support Encode Frame 1 fps~60fps
- Support 2x1080p Real time video input
- Support 4x720P Real time video input
- Support H.264 video encode
- Support AAC-LC audio input

● Efficient Video Decode

- Up to 6x720p video Real time decode
- Up to 3x1080p video Real time decode
- HDMI/VGA output up to1080P@60fps
- 1 x GMAC Interface, Up to 1000M Full Duplex
- Support HDMI+VGA 1080P@60fps+CVBS output
- Support 1080P@60FPS SDI Video output
- Support H.264 video decode

● Video Input interface

- RTSP steam input via WIFI channel
- Support multichannel 1080P/720P/D1 H.264 video steam input
- High-speed UART serial port input for data

● Extensions Function

- Hardware encryption algorithm with AES/DES/3DES
- Digital watermarking
- Support add watermarking before decode up to 8 sector.
- Support I2S, UART, I2C, GPIO interface

- Module Size
120mm*100mm

1.4 Parameters

Parameters	Description	
Video Output	HDMI Output	1080P(1920*1080) @60FPS, 1080P(1920*1080) @30FPS, 720P(1280*720) @60FPS, 720P(1280*720) @30FPS;
	Ethernet output	1080P(1920*1080) @30FPS, 720P(1280*720) @30FPS;
	CVBS Output	640*480@30FPS;
	WIFI Output	1080P(1920*1080) @30FPS, 720P(1280*720) @30FPS;
	SDI Output *	1080P(1920*1080) @60FPS, 1080P(1920*1080) @30FPS, 720P(1280*720) @60FPS, 720P(1280*720) @30FPS;
Audio Input	Audio sample rate support 48K, Bitrate 96Kbps.	
Video Input	Support multichannel stream input with High TX power wifi.	
Video Delay	IOS phone: 200-300ms. Android Phone: about 300ms. HDMI Output: 150-200ms.	
RTMP stream	Support to push RTMP stream to cloud server with audio and video	
Transmission distance	800m -1000m	
Baud rate	115200bps (default) for transparent transmission, customers can modify it by command	
Wireless parameters	5.8GWIFI, support Infra/Soft AP network type	
Power Supply	7-23V power supply, the max current :500mA(Typical Power Value:12V);	
Platform	Linux-3.x + ARM Cortex A9	

* : Under development or Customization for customer .

2 Hardware Overview

2.1 Module overview

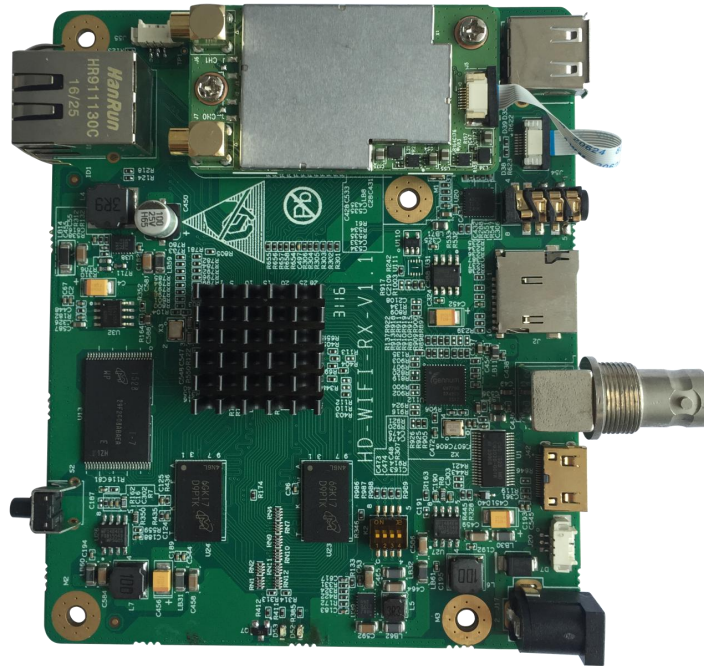


Figure 2-1 RAK567 Top view

2.2 Module size

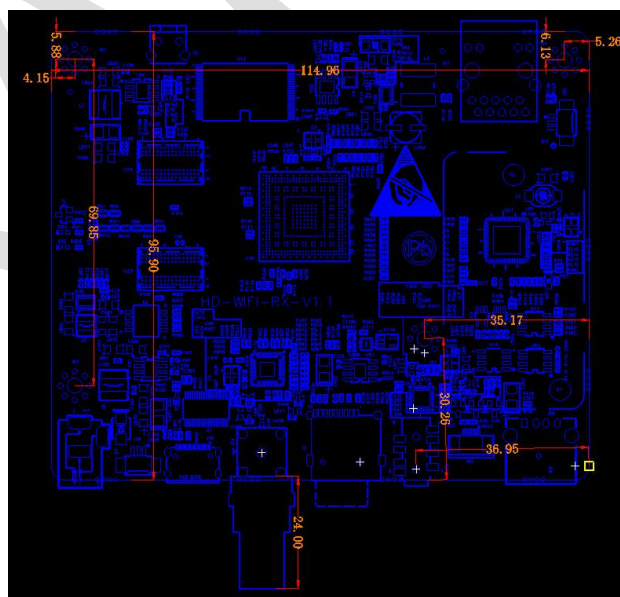


图2-3 模块平面尺寸图

2.3 Interface

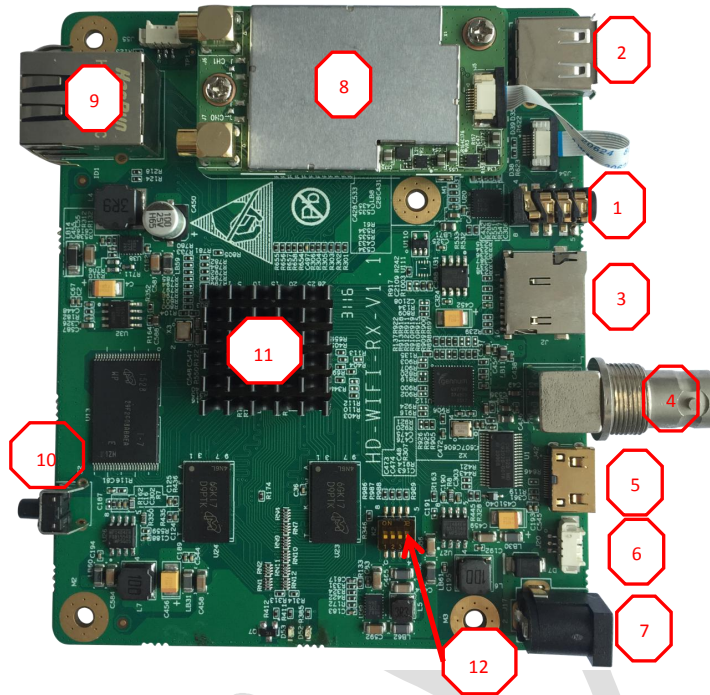


Figure2-4 Hardware Interface

Label	Name	Description	Note
1	CVBS	CVBS output interface	HDMI and WIFI output work at the same time
2	USB	USB output interface, support Apple iMF protocol	developing
3	TF card	TFcard .	
4	SDI	Suupport 3G-SDI vedio output	
5	Mini-HDMI	Support high definition vedio HDMI output	CVBS work with WIFI output at the same time
6	UART	High speed UART transparent transmission	Default Bound rate 115200.
7	DC power	9-24V DC power supply	
8	WIFI module	5.8G high-power WIFI module, double antenna	Highest Transmit power:23dB
9	Ethernet	1000M full-duplex Ethernet Interface	
10	Button	Functional button, WPS Configuration、restore factory etc.	If you press it more than 3s and less than 5s , the module will run into WPS mode . If you press more than 5s ,the module will reset to the factory mode .
11	CPU	CPU	
12	DIP switch	Function selector switch, exchange channel	

RAK567

3 Radio Feature

Item	Key specifications		
Chip	➤ QCA AR9375		
TX/RX	➤ 2T2R		
Frequency range	➤ USA: 2.400 ~ 2.483GHz, 5.15 ~ 5.25GHz, 5.725 ~ 5.85GHz ➤ Europe: 2.400 ~ 2.483GHz, 5.15 ~ 5.25GHz ➤ Japan: 2.400 ~ 2.497GHz, 5.15 ~ 5.25GHz,		
Modulation technique	➤ 802.11 Legacy a/b/g DSSS (DBPSK, DQPSK, CCK) OFDM (BPSK, QPSK, 16-QAM, 64-QAM) DSSS (Direct Sequence Spread Spectrum) with DBPSK (Differential Binary Phase Shift Keying 1Mbps), DQPSK (Differential Quaternary Phase Shift Keying 2Mbps), and CCK (Complementary Code Keying 5.5&11Mbps), and OFDM (Orthogonal Frequency Division Multiplexing with BPSK for 6,9Mbps for 12,18Mbps for 48,54Mbps)		QPSK 16QAM for 24,36Mbps 64QAM
Host interface	➤ 802.11n a/g ➤ USB 2.0		
Channels support	➤ 802.11n b/g US/Canada: 11 (1 ~ 11) Major European country: 13 (1 ~ 13) France: 4 (10 ~ 13) Japan: 11b: 14 (1~13 or 14 th), 11g: 13 (1 ~ 13) ➤ 802.11n a 1). US/Canada: channels (36,40,44,48,52, 149,153,157,161,165) 2). Europe: channel (36,40,44,48,52) 3). Japan: channels (36,40,44,48,52)		
Operation voltage	➤ 5V +/- 5%		
Power consumption @25 °C	802.11ng MCS8(40MHz) (mA) 5V	Avg 350	802.11na MCS8(40MHz) Avg 756

Output Power (Typical-for each chain; with ± 2 dB tolerance). This power table bases on the maximum HW capability complying with IEEE spec regardless the regulatory limitation	> 802.11a																																																																							
	<table border="1"> <thead> <tr> <th>Test Frequencies</th> <th>6-24_Target</th> <th>36_Target</th> <th>48_Target</th> <th>54_Target</th> </tr> </thead> <tbody> <tr><td>5180</td><td>21</td><td>20</td><td>19</td><td>17</td></tr> <tr><td>5320</td><td>21</td><td>20</td><td>19</td><td>17</td></tr> <tr><td>5500</td><td>21</td><td>20</td><td>19</td><td>17</td></tr> <tr><td>5600</td><td>21</td><td>20</td><td>19</td><td>17</td></tr> <tr><td>5700</td><td>21</td><td>20</td><td>19</td><td>17</td></tr> <tr><td>5825</td><td>21</td><td>20</td><td>19</td><td>17</td></tr> </tbody> </table>	Test Frequencies	6-24_Target	36_Target	48_Target	54_Target	5180	21	20	19	17	5320	21	20	19	17	5500	21	20	19	17	5600	21	20	19	17	5700	21	20	19	17	5825	21	20	19	17																																				
	Test Frequencies	6-24_Target	36_Target	48_Target	54_Target																																																																			
	5180	21	20	19	17																																																																			
	5320	21	20	19	17																																																																			
	5500	21	20	19	17																																																																			
	5600	21	20	19	17																																																																			
	5700	21	20	19	17																																																																			
	5825	21	20	19	17																																																																			
	> 802.11b																																																																							
	<table border="1"> <thead> <tr> <th>Test Frequencies</th> <th>1/2_Target</th> <th>5.5_Target</th> <th>11_Target</th> </tr> </thead> <tbody> <tr><td>2412</td><td>16</td><td>16</td><td>16</td></tr> <tr><td>2437</td><td>16</td><td>16</td><td>16</td></tr> <tr><td>2472</td><td>16</td><td>16</td><td>16</td></tr> </tbody> </table>	Test Frequencies	1/2_Target	5.5_Target	11_Target	2412	16	16	16	2437	16	16	16	2472	16	16	16																																																							
	Test Frequencies	1/2_Target	5.5_Target	11_Target																																																																				
	2412	16	16	16																																																																				
	2437	16	16	16																																																																				
	2472	16	16	16																																																																				
	> 802.11g																																																																							
	<table border="1"> <thead> <tr> <th>Test Frequencies</th> <th>6-24_Target</th> <th>36_Target</th> <th>48_Target</th> <th>54_Target</th> </tr> </thead> <tbody> <tr><td>2412</td><td>16</td><td>16</td><td>15</td><td>14</td></tr> <tr><td>2437</td><td>16</td><td>16</td><td>15</td><td>14</td></tr> <tr><td>2472</td><td>16</td><td>16</td><td>15</td><td>14</td></tr> </tbody> </table>	Test Frequencies	6-24_Target	36_Target	48_Target	54_Target	2412	16	16	15	14	2437	16	16	15	14	2472	16	16	15	14																																																			
	Test Frequencies	6-24_Target	36_Target	48_Target	54_Target																																																																			
	2412	16	16	15	14																																																																			
	2437	16	16	15	14																																																																			
2472	16	16	15	14																																																																				
> 802.11n																																																																								
Freq. Range: HT20																																																																								
<table border="1"> <thead> <tr> <th>Test Freq</th> <th>MCS 0/8</th> <th>MCS 1/9</th> <th>MCS 2/10</th> <th>MCS 3/11</th> <th>MCS 4/12</th> <th>MCS 5/13</th> <th>MCS 6/14</th> <th>MCS 7/15</th> </tr> </thead> <tbody> <tr><td>5180</td><td>21</td><td>21</td><td>21</td><td>21</td><td>20</td><td>20</td><td>19</td><td>17</td></tr> <tr><td>5240</td><td>21</td><td>21</td><td>21</td><td>21</td><td>20</td><td>20</td><td>19</td><td>17</td></tr> <tr><td>5320</td><td>21</td><td>21</td><td>21</td><td>21</td><td>20</td><td>20</td><td>19</td><td>17</td></tr> <tr><td>5500</td><td>21</td><td>21</td><td>21</td><td>21</td><td>20</td><td>20</td><td>19</td><td>17</td></tr> <tr><td>5700</td><td>21</td><td>21</td><td>21</td><td>21</td><td>20</td><td>20</td><td>19</td><td>17</td></tr> <tr><td>5745</td><td>21</td><td>21</td><td>21</td><td>21</td><td>20</td><td>20</td><td>19</td><td>17</td></tr> <tr><td>5825</td><td>21</td><td>21</td><td>21</td><td>21</td><td>20</td><td>20</td><td>19</td><td>17</td></tr> </tbody> </table>	Test Freq	MCS 0/8	MCS 1/9	MCS 2/10	MCS 3/11	MCS 4/12	MCS 5/13	MCS 6/14	MCS 7/15	5180	21	21	21	21	20	20	19	17	5240	21	21	21	21	20	20	19	17	5320	21	21	21	21	20	20	19	17	5500	21	21	21	21	20	20	19	17	5700	21	21	21	21	20	20	19	17	5745	21	21	21	21	20	20	19	17	5825	21	21	21	21	20	20	19	17
Test Freq	MCS 0/8	MCS 1/9	MCS 2/10	MCS 3/11	MCS 4/12	MCS 5/13	MCS 6/14	MCS 7/15																																																																
5180	21	21	21	21	20	20	19	17																																																																
5240	21	21	21	21	20	20	19	17																																																																
5320	21	21	21	21	20	20	19	17																																																																
5500	21	21	21	21	20	20	19	17																																																																
5700	21	21	21	21	20	20	19	17																																																																
5745	21	21	21	21	20	20	19	17																																																																
5825	21	21	21	21	20	20	19	17																																																																
Freq. Range: HT40																																																																								
<table border="1"> <thead> <tr> <th>Test Freq</th> <th>MCS 0/8</th> <th>MCS 1/9</th> <th>MCS 2/10</th> <th>MCS 3/11</th> <th>MCS 4/12</th> <th>MCS 5/13</th> <th>MCS 6/14</th> <th>MCS 7/15</th> </tr> </thead> <tbody> <tr><td>5190</td><td>21</td><td>21</td><td>21</td><td>21</td><td>20</td><td>20</td><td>19</td><td>17</td></tr> <tr><td>5230</td><td>21</td><td>21</td><td>21</td><td>21</td><td>20</td><td>20</td><td>19</td><td>17</td></tr> <tr><td>5310</td><td>21</td><td>21</td><td>21</td><td>21</td><td>20</td><td>20</td><td>19</td><td>17</td></tr> <tr><td>5510</td><td>21</td><td>21</td><td>21</td><td>21</td><td>20</td><td>20</td><td>19</td><td>17</td></tr> <tr><td>5670</td><td>21</td><td>21</td><td>21</td><td>21</td><td>20</td><td>20</td><td>19</td><td>17</td></tr> <tr><td>5755</td><td>21</td><td>21</td><td>21</td><td>21</td><td>20</td><td>20</td><td>19</td><td>17</td></tr> <tr><td>5795</td><td>21</td><td>21</td><td>21</td><td>21</td><td>20</td><td>20</td><td>19</td><td>17</td></tr> </tbody> </table>	Test Freq	MCS 0/8	MCS 1/9	MCS 2/10	MCS 3/11	MCS 4/12	MCS 5/13	MCS 6/14	MCS 7/15	5190	21	21	21	21	20	20	19	17	5230	21	21	21	21	20	20	19	17	5310	21	21	21	21	20	20	19	17	5510	21	21	21	21	20	20	19	17	5670	21	21	21	21	20	20	19	17	5755	21	21	21	21	20	20	19	17	5795	21	21	21	21	20	20	19	17
Test Freq	MCS 0/8	MCS 1/9	MCS 2/10	MCS 3/11	MCS 4/12	MCS 5/13	MCS 6/14	MCS 7/15																																																																
5190	21	21	21	21	20	20	19	17																																																																
5230	21	21	21	21	20	20	19	17																																																																
5310	21	21	21	21	20	20	19	17																																																																
5510	21	21	21	21	20	20	19	17																																																																
5670	21	21	21	21	20	20	19	17																																																																
5755	21	21	21	21	20	20	19	17																																																																
5795	21	21	21	21	20	20	19	17																																																																
Freq. Range: HT20																																																																								
<table border="1"> <thead> <tr> <th>Test Freq</th> <th>MCS 0/8</th> <th>MCS 1/9</th> <th>MCS 2/10</th> <th>MCS 3/11</th> <th>MCS 4/12</th> <th>MCS 5/13</th> <th>MCS 6/14</th> <th>MCS 7/15</th> </tr> </thead> <tbody> <tr><td>2412</td><td>16</td><td>16</td><td>16</td><td>16</td><td>15</td><td>15</td><td>14</td><td>14</td></tr> <tr><td>2437</td><td>16</td><td>16</td><td>16</td><td>16</td><td>15</td><td>15</td><td>14</td><td>14</td></tr> <tr><td>2472</td><td>16</td><td>16</td><td>16</td><td>16</td><td>15</td><td>15</td><td>14</td><td>14</td></tr> </tbody> </table>	Test Freq	MCS 0/8	MCS 1/9	MCS 2/10	MCS 3/11	MCS 4/12	MCS 5/13	MCS 6/14	MCS 7/15	2412	16	16	16	16	15	15	14	14	2437	16	16	16	16	15	15	14	14	2472	16	16	16	16	15	15	14	14																																				
Test Freq	MCS 0/8	MCS 1/9	MCS 2/10	MCS 3/11	MCS 4/12	MCS 5/13	MCS 6/14	MCS 7/15																																																																
2412	16	16	16	16	15	15	14	14																																																																
2437	16	16	16	16	15	15	14	14																																																																
2472	16	16	16	16	15	15	14	14																																																																
Freq. Range: HT40																																																																								
<table border="1"> <thead> <tr> <th>Test Freq</th> <th>MCS 0/8</th> <th>MCS 1/9</th> <th>MCS 2/10</th> <th>MCS 3/11</th> <th>MCS 4/12</th> <th>MCS 5/13</th> <th>MCS 6/14</th> <th>MCS 7/15</th> </tr> </thead> <tbody> <tr><td>2412</td><td>16</td><td>16</td><td>16</td><td>16</td><td>15</td><td>15</td><td>14</td><td>14</td></tr> <tr><td>2437</td><td>16</td><td>16</td><td>16</td><td>16</td><td>15</td><td>15</td><td>14</td><td>14</td></tr> <tr><td>2472</td><td>16</td><td>16</td><td>16</td><td>16</td><td>15</td><td>15</td><td>14</td><td>14</td></tr> </tbody> </table>	Test Freq	MCS 0/8	MCS 1/9	MCS 2/10	MCS 3/11	MCS 4/12	MCS 5/13	MCS 6/14	MCS 7/15	2412	16	16	16	16	15	15	14	14	2437	16	16	16	16	15	15	14	14	2472	16	16	16	16	15	15	14	14																																				
Test Freq	MCS 0/8	MCS 1/9	MCS 2/10	MCS 3/11	MCS 4/12	MCS 5/13	MCS 6/14	MCS 7/15																																																																
2412	16	16	16	16	15	15	14	14																																																																
2437	16	16	16	16	15	15	14	14																																																																
2472	16	16	16	16	15	15	14	14																																																																

EVM	The transmit modulation accuracy is measured using error vector magnitude (EVM). EVM is the magnitude of the phase difference as a function of time between an ideal reference signal and the measured transmitted signal.			
	> 802.11a			
	Modulation	Code Rate	Relative constellation error (dB) IEEE Spec (1Tx dB)	Relative constellation error (dB) Typical (1Tx dB)
	BPSK	1/2	-5	-25
	BPSK	3/4	-8	-25
	QPSK	1/2	-10	-25
	QPSK	3/4	-13	-25
	16-QAM	1/2	-16	-25
	16-QAM	3/4	-19	-28
	64-QAM	2/3	-22	-30
	64-QAM	3/4	-25	-31
	> 802.11b			
	Modulation	Code Rate	Relative constellation error (dB) IEEE Spec (1Tx dB)	Relative constellation error (dB) Typical (1Tx dB)
	DBPSK		-10	-28
	DQPSK		-10	-28
	CCK		-10	-28
	> 802.11g			
	Modulation	Code Rate	Relative constellation error (dB) IEEE Spec (1Tx dB)	Relative constellation error (dB) Typical (1Tx dB)
	BPSK	1/2	-5	-28
	BPSK	3/4	-8	-28
	QPSK	1/2	-10	-28
	QPSK	3/4	-13	-28
	16-QAM	1/2	-16	-28
	16-QAM	3/4	-19	-29
	64-QAM	2/3	-22	-29
64-QAM	3/4	-25	-29	
> 802.11ng				
Modulation	Code Rate	Relative constellation error (dB) IEEE Spec (1Tx dB)	Relative constellation error (dB) Typical (1Tx dB)	
HT20				
(MCS0)	BPSK 1/2	-5	-25	
(MCS1)	QPSK 1/2	-10	-26	
(MCS2)	QPSK 3/4	-13	-26	
(MCS3)	16-QAM 1/2	-16	-26	
(MCS4)	16-QAM 3/4	-19	-29	
(MCS5)	64-QAM 2/3	-22	-30	
(MCS6)	64-QAM 3/4	-25	-30	
(MCS7)	64-QAM 5/6	-27	-31	
(MCS8)	BPSK 1/2	-5	-25	
(MCS9)	QPSK 1/2	-10	-26	
(MCS10)	QPSK 3/4	-13	-26	

(MCS11)	16-QAM	1/2	-16	-26
(MCS12)	16-QAM	3/4	-19	-29
(MCS13)	64-QAM	2/3	-22	-30
(MCS14)	64-QAM	3/4	-25	-30
(MCS15)	64-QAM	5/6	-27	-31

HT40

(MCS0)	BPSK	1/2	-5	-26
(MCS1)	QPSK	1/2	-10	-27
(MCS2)	QPSK	3/4	-13	-27
(MCS3)	16-QAM	1/2	-16	-27
(MCS4)	16-QAM	3/4	-19	-29
(MCS5)	64-QAM	2/3	-22	-30
(MCS6)	64-QAM	3/4	-25	-30
(MCS7)	64-QAM	5/6	-27	-31
(MCS8)	BPSK	1/2	-5	-26
(MCS9)	QPSK	1/2	-10	-27
(MCS10)	QPSK	3/4	-13	-27
(MCS11)	16-QAM	1/2	-16	-27
(MCS12)	16-QAM	3/4	-19	-29
(MCS13)	64-QAM	2/3	-22	-30
(MCS14)	64-QAM	3/4	-25	-30
(MCS15)	64-QAM	5/6	-27	-31

> 802.11na
EVM
Modulation Code Rate Relative constellation error (dB) Relative constellation error (dB)
IEEE Spec (1Tx dB)
Typical (1Tx dB)
HT20

(MCS0)	BPSK	1/2	-5	-25
(MCS1)	QPSK	1/2	-10	-26
(MCS2)	QPSK	3/4	-13	-26
(MCS3)	16-QAM	1/2	-16	-26
(MCS4)	16-QAM	3/4	-19	-29
(MCS5)	64-QAM	2/3	-22	-30
(MCS6)	64-QAM	3/4	-25	-30
(MCS7)	64-QAM	5/6	-27	-31
(MCS8)	BPSK	1/2	-5	-25
(MCS9)	QPSK	1/2	-10	-26
(MCS10)	QPSK	3/4	-13	-26
(MCS11)	16-QAM	1/2	-16	-26
(MCS12)	16-QAM	3/4	-19	-29
(MCS13)	64-QAM	2/3	-22	-30
(MCS14)	64-QAM	3/4	-25	-30
(MCS15)	64-QAM	5/6	-27	-31

HT40

(MCS0)	BPSK	1/2	-5	-26
(MCS1)	QPSK	1/2	-10	-27
(MCS2)	QPSK	3/4	-13	-27
(MCS3)	16-QAM	1/2	-16	-27
(MCS4)	16-QAM	3/4	-19	-29
(MCS5)	64-QAM	2/3	-22	-30
(MCS6)	64-QAM	3/4	-25	-30
(MCS7)	64-QAM	5/6	-27	-31
(MCS8)	BPSK	1/2	-5	-26
(MCS9)	QPSK	1/2	-10	-27
(MCS10)	QPSK	3/4	-13	-27

	(MCS11) 16-QAM 1/2		-16	-27
	(MCS12) 16-QAM 3/4		-19	-29
	(MCS13) 64-QAM 2/3		-22	-30
	(MCS14) 64-QAM 3/4		-25	-30
	(MCS15) 64-QAM 5/6		-27	-31
Sensitivity (1RX with +4/-2dB tolerance, dBm)	➤ 802.11a			
	Modulation	Code Rate	IEEE Spec (1Rx dBm)	Typical (1Rx dBm)
	BPSK	1/2	-82	-88
	BPSK	3/4	-81	-86
	QPSK	1/2	-79	-85
	QPSK	3/4	-77	-83
	16-QAM	1/2	-74	-79
	16-QAM	3/4	-70	-77
	64-QAM	2/3	-66	-73
	64-QAM	3/4	-65	-70
	➤ 802.11b			
	Modulation		IEEE Spec (1Rx dBm)	Typical (1Rx dBm)
	DBPSK		not specified	-93
	DQPSK		not specified	-91
	CCK		not specified	-87
	➤ 802.11g			
	Modulation	Code Rate	IEEE Spec (1Rx dBm)	Typical (1Rx dBm)
	BPSK	1/2	-82	-93
	BPSK	3/4	-81	-91
	QPSK	1/2	-79	-89
	QPSK	3/4	-77	-86
	16-QAM	1/2	-74	-83
	16-QAM	3/4	-70	-80
	64-QAM	2/3	-66	-75
	64-QAM	3/4	-65	-70
	➤ 802.11ng			
	Modulation	Code Rate	IEEE Spec (1Rx dBm)	Typical (1Rx dBm)
	HT20			
	(MCS0) BPSK	1/2	-82	-90
	(MCS1) QPSK	1/2	-79	-87
	(MCS2) QPSK	3/4	-77	-86
	(MCS3) 16-QAM	1/2	-74	-84
	(MCS4) 16-QAM	3/4	-70	-80
	(MCS5) 64-QAM	2/3	-66	-77
	(MCS6) 64-QAM	3/4	-65	-72
	(MCS7) 64-QAM	5/6	-64	-67
HT40				
(MCS0) BPSK	1/2	-79	-88	
(MCS1) QPSK	1/2	-76	-86	
(MCS2) QPSK	3/4	-74	-84	
(MCS3) 16-QAM	1/2	-71	-80	
(MCS4) 16-QAM	3/4	-67	-78	
(MCS5) 64-QAM	2/3	-63	-73	
(MCS6) 64-QAM	3/4	-62	-70	
(MCS7) 64-QAM	5/6	-61	-64	

	➤ 802.11na <table border="1"> <thead> <tr> <th>HT20</th> <th>Modulation</th> <th>Code Rate</th> <th>IEEE Spec (1Rx dBm)</th> </tr> </thead> <tbody> <tr> <td>(MCS0) BPSK</td> <td>1/2</td> <td>-82</td> <td>-89</td> </tr> <tr> <td>(MCS1) QPSK</td> <td>1/2</td> <td>-79</td> <td>-87</td> </tr> <tr> <td>(MCS2) QPSK</td> <td>3/4</td> <td>-77</td> <td>-84</td> </tr> <tr> <td>(MCS3) 16-QAM</td> <td>1/2</td> <td>-74</td> <td>-80</td> </tr> <tr> <td>(MCS4) 16-QAM</td> <td>3/4</td> <td>-70</td> <td>-77</td> </tr> <tr> <td>(MCS5) 64-QAM</td> <td>2/3</td> <td>-66</td> <td>-72</td> </tr> </tbody> </table>	HT20	Modulation	Code Rate	IEEE Spec (1Rx dBm)	(MCS0) BPSK	1/2	-82	-89	(MCS1) QPSK	1/2	-79	-87	(MCS2) QPSK	3/4	-77	-84	(MCS3) 16-QAM	1/2	-74	-80	(MCS4) 16-QAM	3/4	-70	-77	(MCS5) 64-QAM	2/3	-66	-72							
HT20	Modulation	Code Rate	IEEE Spec (1Rx dBm)																																	
(MCS0) BPSK	1/2	-82	-89																																	
(MCS1) QPSK	1/2	-79	-87																																	
(MCS2) QPSK	3/4	-77	-84																																	
(MCS3) 16-QAM	1/2	-74	-80																																	
(MCS4) 16-QAM	3/4	-70	-77																																	
(MCS5) 64-QAM	2/3	-66	-72																																	
Sensitivity (1RX with +4/-2dB tolerance, dBm)	<table border="1"> <tbody> <tr> <td>(MCS6) 64-QAM</td> <td>3/4</td> <td>-65</td> <td>-71</td> </tr> <tr> <td>(MCS7) 64-QAM</td> <td>5/6</td> <td>-64</td> <td>-67</td> </tr> </tbody> </table>	(MCS6) 64-QAM	3/4	-65	-71	(MCS7) 64-QAM	5/6	-64	-67																											
	(MCS6) 64-QAM	3/4	-65	-71																																
(MCS7) 64-QAM	5/6	-64	-67																																	
<table border="1"> <thead> <tr> <th>HT40</th> <th>Modulation</th> <th>Code Rate</th> <th>IEEE Spec (1Rx dBm)</th> </tr> </thead> <tbody> <tr> <td>(MCS0) BPSK</td> <td>1/2</td> <td>-79</td> <td>-84</td> </tr> <tr> <td>(MCS1) QPSK</td> <td>1/2</td> <td>-76</td> <td>-81</td> </tr> <tr> <td>(MCS2) QPSK</td> <td>3/4</td> <td>-74</td> <td>-79</td> </tr> <tr> <td>(MCS3) 16-QAM</td> <td>1/2</td> <td>-71</td> <td>-76</td> </tr> <tr> <td>(MCS4) 16-QAM</td> <td>3/4</td> <td>-67</td> <td>-72</td> </tr> <tr> <td>(MCS5) 64-QAM</td> <td>2/3</td> <td>-63</td> <td>-70</td> </tr> <tr> <td>(MCS6) 64-QAM</td> <td>3/4</td> <td>-62</td> <td>-67</td> </tr> <tr> <td>(MCS7) 64-QAM</td> <td>5/6</td> <td>-61</td> <td>-64</td> </tr> </tbody> </table>	HT40	Modulation	Code Rate	IEEE Spec (1Rx dBm)	(MCS0) BPSK	1/2	-79	-84	(MCS1) QPSK	1/2	-76	-81	(MCS2) QPSK	3/4	-74	-79	(MCS3) 16-QAM	1/2	-71	-76	(MCS4) 16-QAM	3/4	-67	-72	(MCS5) 64-QAM	2/3	-63	-70	(MCS6) 64-QAM	3/4	-62	-67	(MCS7) 64-QAM	5/6	-61	-64
HT40	Modulation	Code Rate	IEEE Spec (1Rx dBm)																																	
(MCS0) BPSK	1/2	-79	-84																																	
(MCS1) QPSK	1/2	-76	-81																																	
(MCS2) QPSK	3/4	-74	-79																																	
(MCS3) 16-QAM	1/2	-71	-76																																	
(MCS4) 16-QAM	3/4	-67	-72																																	
(MCS5) 64-QAM	2/3	-63	-70																																	
(MCS6) 64-QAM	3/4	-62	-67																																	
(MCS7) 64-QAM	5/6	-61	-64																																	
Transmit spectrum mask	⌚ For transmitted spectral mask for 11a shall be less than -40dBr for $fc-30MHz < f < fc+30MHz$. ⌚ For transmitted spectral mask for 11b shall be less than -50dBr for $fc-22MHz < f < fc+22MHz$. ⌚ For transmitted spectral mask for 11g shall be less than -40dBr for $fc-30MHz < f < fc+30MHz$. ⌚ For transmitted spectral mask for 11n 20MHz shall be less than -45dBr for $fc-30MHz < f < fc+30MHz$. ⌚ For transmitted spectral mask for 11n 40MHz shall be less than -45dBr for $fc-60MHz < f < fc+60MHz$.																																			
Transmit spectrum flatness	⌚ For 802.11a/g the average energy of the constellations in each of spectral lines -16..-1 and +1..+16 will deviate no more than +/- 2dB from their average energy. For 802.11n 40MHz mode, the average energy of the constellations in each of spectral lines -42..-2 and +2..+42 will deviate no more than +/- 2dB from their average energy. ⌚ The transmitted spectral flatness should be with in +/- 4dB.																																			
Transmit center frequency tolerance	⌚ The transmitted center frequency tolerance shall be ± 20 ppm maximum.																																			
Receiver maximum input level	<table border="1"> <thead> <tr> <th>Modulation</th> <th>Code Rate</th> <th>IEEE Spec (1Rx dBm)</th> </tr> </thead> <tbody> <tr> <td colspan="3" style="text-align: center;">>-30</td> </tr> <tr> <td colspan="3">⌚ 802.11b</td> </tr> <tr> <td>Modulation</td> <td></td> <td>IEEE Spec (1Rx dBm)</td> </tr> <tr> <td>DBPSK</td> <td></td> <td>>-10</td> </tr> <tr> <td>DQPSK</td> <td></td> <td>>-10</td> </tr> <tr> <td>CCK</td> <td></td> <td>>-10</td> </tr> <tr> <td colspan="3">⌚ 802.11g</td> </tr> <tr> <td>Modulation</td> <td>Code Rate</td> <td>IEEE Spec (1Rx dBm)</td> </tr> <tr> <td colspan="3" style="text-align: center;">>-20</td> </tr> </tbody> </table>	Modulation	Code Rate	IEEE Spec (1Rx dBm)	>-30			⌚ 802.11b			Modulation		IEEE Spec (1Rx dBm)	DBPSK		>-10	DQPSK		>-10	CCK		>-10	⌚ 802.11g			Modulation	Code Rate	IEEE Spec (1Rx dBm)	>-20							
Modulation	Code Rate	IEEE Spec (1Rx dBm)																																		
>-30																																				
⌚ 802.11b																																				
Modulation		IEEE Spec (1Rx dBm)																																		
DBPSK		>-10																																		
DQPSK		>-10																																		
CCK		>-10																																		
⌚ 802.11g																																				
Modulation	Code Rate	IEEE Spec (1Rx dBm)																																		
>-20																																				

4 Electrical Characteristics

4.1 Absolute maximum

The table below gives the absolute maximum value, exceed the maximum range may make the module device damaged. In order to avoid the modules and devices damaged please operate under specified conditions.

Table 4-1: parameter and range

parameters	Symbol	value	uint
The external power supply voltage	VDD	9~25	V
IO maximum input voltage	3V3V _{in} IOMax	3.6	V
IO minimum input voltage	3V3V _{in} IOMin	-0.3	V
Storage temperature	T _{store}	-40~+125	°C
Operation temperature	T _{oper}	-20~+85	°C

4.2 Recommended operating parameters

Figure 4-2 Power supply range

parameters	Symbol	minimum	Typical values	maximum	unit
Power supply	VDD	9.0	12.0	25.0	V

5 Order Information

Table 5-1: Product Models

PART NO.	Description	Volume/tray	MPQ
RAK567	Image transmission,plug and play,	2PCS/tray	10PCS

RAK567

6 Sales and Technical Support

Shenzhen Headquarters

Room 1007, Hangsheng Technology Building, South Four Road, Science and Technology Park,

Nanshan District, Shenzhen

Email: ken.yu@rakwireless.com

TEL: 0755-86108311

Shanghai R&D Center

B205 Lvliang Technology Pioneer Park, 2588 Hongmei South Road, Minhang District, Shanghai

Email: steven.tang@rakwireless.com

TEL: 021-61553990

Beijing Office

Tencent Zhongchang Zone, Huilongguan, Changping District, Beijing

Email: allan.jin@rakwireless.com



7 Revision&History

Revision	Update	Date
V1.0	Modify the document Format.	2016-06-09
V1.1	Fix some bug in the document .	2016-07-09
V1.2	1, Update the module size . 2, Add Ethernet interface video output and RTMP stream.	2016-08-20
V1.3	1, Delete the USB video function.	2016-10-20
V1.4	1, Delete the TF card error description.	2016-10-31
V1.5	Update sales and Technical Support.	2016-11-10